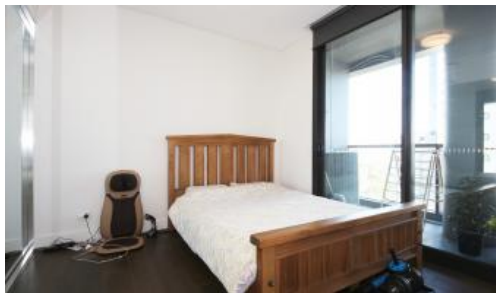
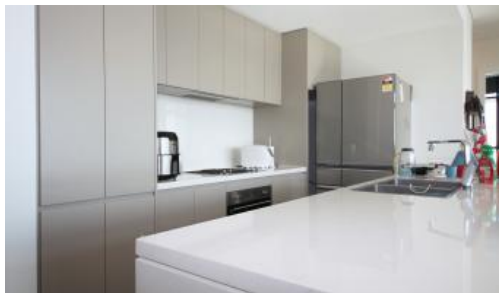




**2408, 1 Brushbox Street, Sydney Olympic Park**



### Two Bedroom plus Study with Panoramic View

Modern & Spacious Two Bedroom plus Study apartment located on the 24th floor offers panoramic parkland views and is conveniently positioned just moments from restaurants, sporting & entertainment venues plus Sydney Olympic Park train station and popular bus routes.

- Bedroom with built-in robe, main with access to Balcony
- Spacious study area
- Island benchtop with European Brand kitchen appliances
- Modern and luxury bathroom
- Basement carspace in security carpark with lift access
- 5 minutes walk to Sydney Olympic Park Station and Bus stops
- Easy access to main roads such as Homebush Drive and M4 Highway
- Close to DFO, Sydney Market, Costco and Rhodes shopping precinct;
- Enjoy surrounded World class sports facilities, restaurants and cafes

Contact Geoff on 0404 565 693 for inquiries or private inspection.

The above information provided has been furnished to us by the vendor/s. We have not verified whether or not that information is accurate and do not have any belief in one way or the other in its accuracy. We do not accept any responsibility to any person for its accuracy and do no more than pass it on. All interested parties should make and rely upon their own inquiries in order to determine whether or not this information is in fact accurate.

 2  2  1

<b>Price</b>	DEPOSIT TAKEN
<b>Property Type</b>	Rental
<b>Property ID</b>	1135

#### Agent Details

Yim (Kelvin) Kam - 0449863838

#### Office Details

Ashfield  
Suite 58 1 Brown Street Ashfield NSW  
2131 Australia  
02 9799 8886

