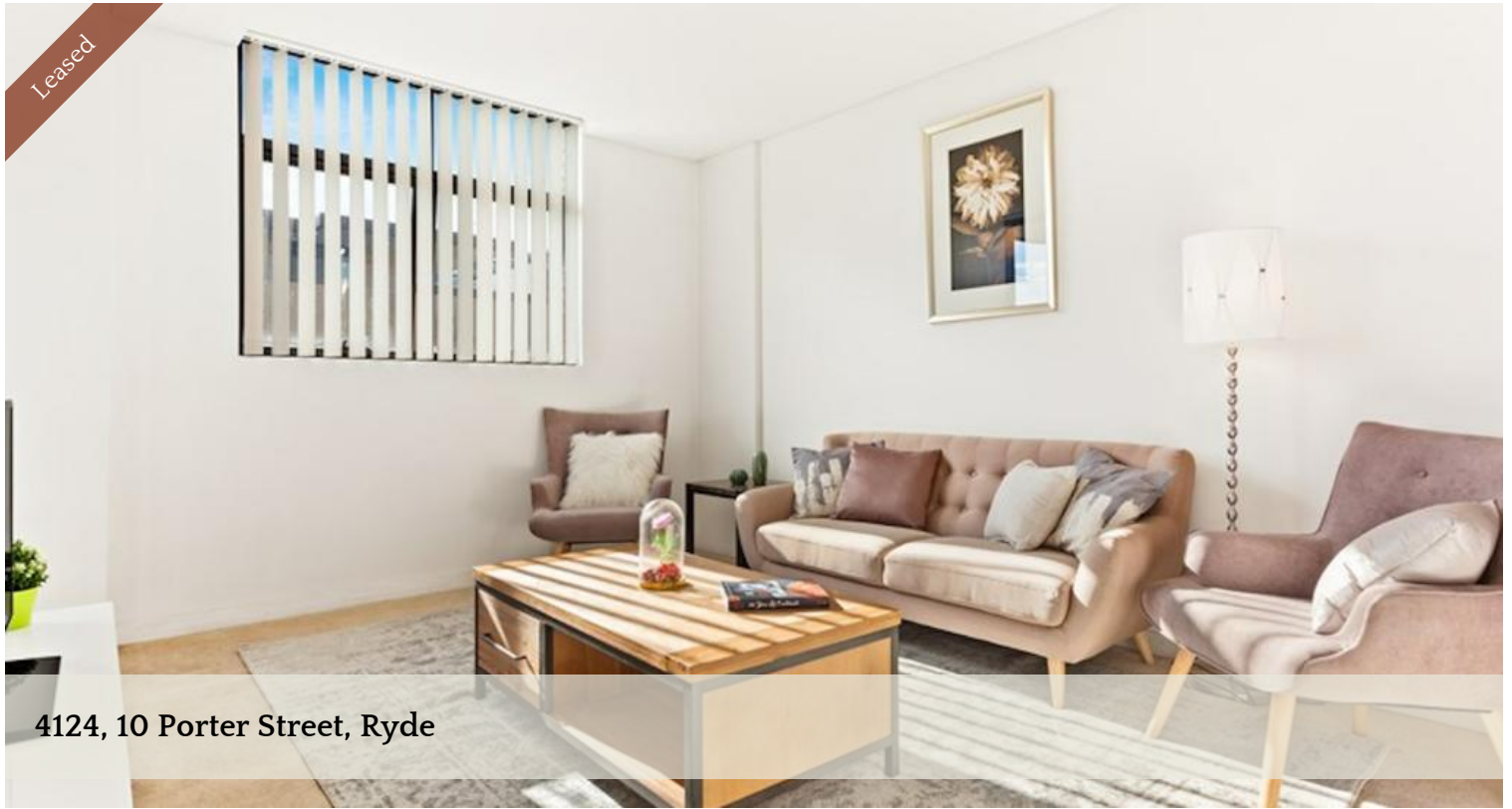


Leased



4124, 10 Porter Street, Ryde



Immaculate Apartment with Water View

Immaculately presented two bedroom apartment situated on the quiet Porter Street. Conveniently located within walking distance to transport, Top Ryde shopping centre and waterfront parks.

Features include:

- Corner position apartment allows cross breeze
- Natural light floods the apartment
- Separate living and dining areas allowing for flexibility
- Oversized kitchen area with gas cooking facilities
- Two spacious bedrooms, both with built-in robes
- Master Bedroom also features ensuite and access to balcony
- Large, corner balcony with water views
- Security complex including registered car space
- Property features internal laundry
- Within walking distance to transport and Top Ryde shopping centre

The above information provided has been furnished to us by the vendor/s. We have not verified whether or not that information is accurate and do not have any belief in one way or the other in its accuracy. We do not accept any responsibility to any person for its accuracy and do no more than pass it on. All interested parties should make and rely upon their own inquiries in order to determine whether or not this information is in fact accurate.

🛏 2 📶 2 🚗 1

Price	Deposit taken
Property Type	Rental
Property ID	1270

Agent Details

Ye Li (Shirley) Zhang - 0424072823

Office Details

Ashfield
Suite 58 1 Brown Street Ashfield NSW
2131 Australia
02 9799 8886

C A P R I
PROPERTY MANAGEMENT