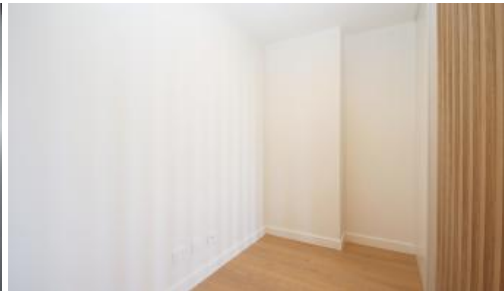




B704, 57 Ashmore Street, Erskineville



Nearly New Larger one bedroom plus study with sunny balcony
With exquisite architectural work and designer detail reflected at every level, the brilliantly curvaceous exterior and stately bronze facade hints at the grandeur within. Inspired by old-world glamour and nouveau prestige, Park Sydney welcomes a new era for urban luxury living.

- Larger bedroom with built in wardrobes
- Sleek designer kitchen with high end appliances including dishwasher
- Well appointed main bathroom with separate internal laundry
- Spacious light filled living areas
- Study perfect for the home office and one Storage
- Sunny courtyard perfect for entertaining
- Ducted air conditioning
- Communal BBQ facilities
- Only moments to shops, parks, cafes and restaurants
- Walk to Sydney Park & Erskineville Station

Call Alan on 0410413886 or Pauline 0493227675 for inspection

The above information provided has been furnished to us by the vendor/s. We have not verified whether or not that information is accurate and do not have any belief in one way or the other in its accuracy. We do not accept any responsibility to any person for its accuracy and do no more than pass it on. All interested parties should make and rely upon their own inquiries in order to determine whether or not this information is in fact accurate.

1 1

Price Deposit Taken - Inspection cancel

Property Type Rental

Property ID 1435

Agent Details

Alan Tong - 0410413886

Wenting(Pauline) Shi - 0493227675

Office Details

Ashfield

Suite 58 1 Brown Street Ashfield NSW

2131 Australia

02 9799 8886

