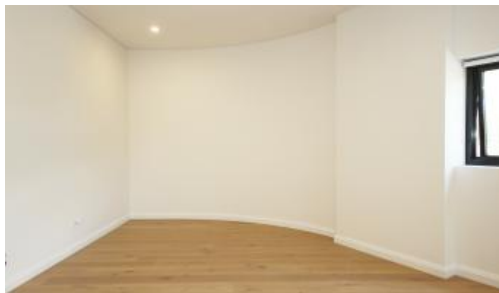


Leased



Tower 6, 8 Civic Way, Rouse Hill



Brand New 2 Bedroom Apartment Located in the Heart of Rouse Hill

🛏 2 🚿 2 🚗 1

Brand new two bedroom apartment in the Proximity complex just moments from the Rouse Hill Town Centre precinct. It is located perfectly within doorstep of restaurants, cafes, entertainment & shoppings. And it is just minutes walk from Rouse Hill Metro Station and T-way buses to the city.

Features include:

- Electricity and Gas bills included
- Spacious light-filled bedroom with built-in wardrobe
- Gourmet gas cooking kitchen with high quality stone bench, stainless steel appliances, pull-out pantry and mirror splashback
- Internal laundry with dryer
- Ducted air-conditioning
- NBN Ready
- Security car space and storage cage
- 1 km to Ironbark Ridge Public School
- 2 minutes walk to Rouse Hill Metro Station

Price	DEPOSIT TAKEN
Property Type	Rental
Property ID	1443

Agent Details

Yim (Kelvin) Kam - 0449863838
Jason Wu - 0493243385

Office Details

Ashfield
Suite 58 1 Brown Street Ashfield NSW
2131 Australia
02 9799 8886



The above information provided has been furnished to us by the vendor/s. We have not verified whether or not that information is accurate and do not have any belief in one way or the other in its accuracy. We do not accept any responsibility to any person for its accuracy and do no more than pass it on. All interested parties should make and rely upon their own inquiries in order to determine whether or not this information is in fact accurate.