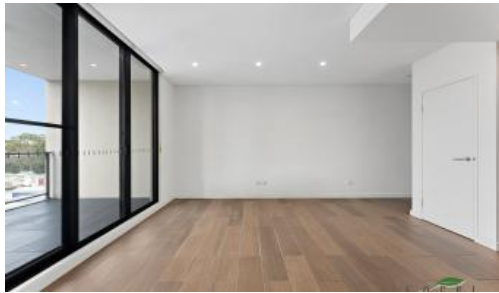




**2bed+study/548-568, Canterbury Rd, Campsie**



**ONSITE PROPERTY MANAGER - NEARLY NEW DELUXE 2 BEDDER WITH STUDY IN THE HEART OF CAMPSIE**

This nearly new exciting complex is coming onto the Campsie market! Fantastic 2 bedroom apartment for lease in Emporia in Campsie. Conveniently located close to shops, restaurants, train stations and bus stops.

Feature of the apartment include:

- \* Spacious bedrooms, both with built-in wardrobe
- \* Separate study nook inside the Master bedroom
- \* Stylish kitchen with stainless steel appliances, gas cooking and stone benchtops
- \* Level 6, quiet with a high level of privacy
- \* Internal Laundry with dryer
- \* Lift access
- \* Reverse cycle air conditioning throughout
- \* Intercom system with a video display for increased security
- \* Residents only rooftop entertainment Area, amazing view!
- \* 1 Secure parking space
- \* 1 Storage

Located:

- \* Canterbury Hospital Across the Road
- \* 4 minutes bicycle ride to Campsie Train Station
- \* 6 minutes bicycle ride to Canterbury Train Station

2 2 1

**Price** \$750 per week  
**Property Type** Rental  
**Property ID** 1700

**Agent Details**

Dawn Chan - 0478 768 024

**Office Details**

Ashfield  
 Suite 58 1 Brown Street Ashfield NSW  
 2131 Australia  
 02 9799 8886



\* 400 metres walk to Coles at Clemton Park Shopping Village

\* 15 minutes walk to Campsie central shopping area

\* 3.1kms to Canterbury Racecourse

\* 2kms to M5 Motorway Entry Kingsgrove

\* 11.7kms to Sydney Olympic Park

\* 13.3kms to Sydney CBD

Office onsite, contact us now to inspect Monday to Friday, private inspections by appointment are available!

The above information provided has been furnished to us by the vendor/s. We have not verified whether or not that information is accurate and do not have any belief in one way or the other in its accuracy. We do not accept any responsibility to any person for its accuracy and do no more than pass it on. All interested parties should make and rely upon their own inquiries in order to determine whether or not this information is in fact accurate.