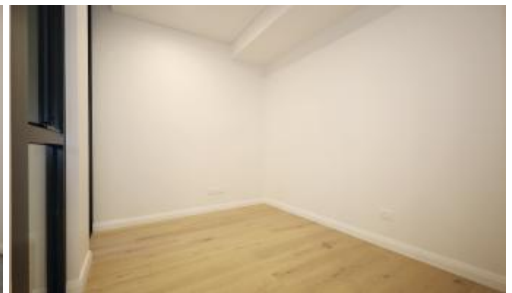




**Level 3, 25 Ashford Avenue, Castle Hill**



## Brand New 2 Bedroom Apartment at The Ashford

This brand new 2 bedroom apartment is located in the latest developed residential complex, The Ashford, offering stunning landscaped communal areas and rooftop gardens as well as barbecue facilities.

### Features include:

- Two generous size bedrooms, main bedroom with built in mirrored wardrobe
- Spacious living room flowing to the balcony
- Kitchen with built-in oven, cooktop and dishwasher
- Timber flooring in living area and carpet in bedroom
- Ducted air conditioning
- Internal laundry with dryer
- Secure basement parking with storage cage
- Short walk from Showground Metro station
- Convenient access to shopping, business amenities, and schools

The above information provided has been furnished to us by the vendor/s. We have not verified whether or not that information is accurate and do not have any belief in one way or the other in its accuracy. We do not accept any responsibility to any person for its accuracy and do no more than pass it on. All interested parties should make and rely upon their own inquiries in order to determine whether or not this information is in fact accurate.

2 1 1

**Price** DEPOSIT TAKE - \$750 per week - Bills Included

**Property Type** Rental

**Property ID** 1732

### Agent Details

Yim (Kelvin) Kam - 0449863838

### Office Details

Ashfield  
Suite 58 1 Brown Street Ashfield NSW  
2131 Australia  
02 9799 8886

**CAPRI**  
PROPERTY MANAGEMENT