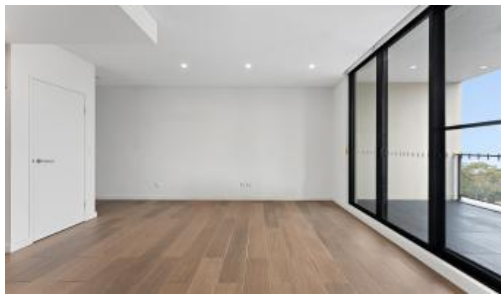




2Bed+Study 135/548, Canterbury Road, Campsie



2-Bedroom Plus Study Apartment In The Heart Of Campsie For Sale - Onsite Sale Office

Imagine a sleek, modern 2-bedroom apartment situated in a prime location that offers both convenience and a sense of privacy. Conveniently location in a vibrant neighborhood, this apartment in the "Emporia" complex is close to essential amenities such as Clemton Park Shopping Village, Campsie Shopping Centre, Train Stations, Canterbury Hospital etc.

A range of impressive features of this apartment include:

- Open plan living area with large floor-to-ceiling sliding doors
- Stainless-steel kitchen appliances, including a built-in oven, a microwave oven, a gas cooktop and a dishwasher. Stone bench tops.
- Spacious bedrooms, both with a build-in wardrobe. Extra Study nook area inside the Master Bedroom.
- High quality bathrooms. Ensuite with a shower and 2nd bathroom with a full-sized bathtub
- Level 7, with excellent privacy and peaceful views
- Ducted air conditioning system with dual-zone control
- Internal laundry with a dryer
- Intercom system featuring a video display for enhanced security

2 2 2

Price \$660,000-\$680,000
Property Type Residential
Property ID 1806

Agent Details

Dawn Chan - 0478 768 024
 Yim (Kelvin) Kam - 0449863838

Office Details

Ashfield
 Suite 58 1 Brown Street Ashfield NSW
 2131 Australia
 02 9799 8886



- 2 Secure parking space and 1 storage cage
- Building rooftop exclusive to residents, complete with BBQ facilities and entertainment area offering 360 degree stunning views.
- Potential rent price \$760-\$780/week (Onsite Property Manager)
- Great for both First Home Buyers or Property Investors!

Location:

- Canterbury Hospital Across the Road
- 4 minutes bicycle ride to Campsie Train Station
- 6 minutes bicycle ride to Canterbury Train Station
- 500 metres walk to Coles at Clemton Park Shopping Village
- 15 minutes walk to Campsie central shopping area
- 3.1kms to Canterbury Racecourse
- 2kms to M5 Motorway Entry Kingsgrove
- 11.7kms to Sydney Olympic Park
- 13.3kms to Sydney CBD

Outgoings:

Council Rates: Approx. \$411/quarter

Water Rates: Approx. \$185/quarter + usage

Strata: Approx. \$1004/quarter

Sales Office is onsite. Private inspections by appointment are welcome!

The above information provided has been furnished to us by the vendor/s. We have not verified whether or not that information is accurate and do not have any belief in one way or the other in its accuracy. We do not accept any responsibility to any person for its accuracy and do no more than pass it on. All interested parties should make and rely upon their own inquiries in order to determine whether or not this information is in fact accurate.