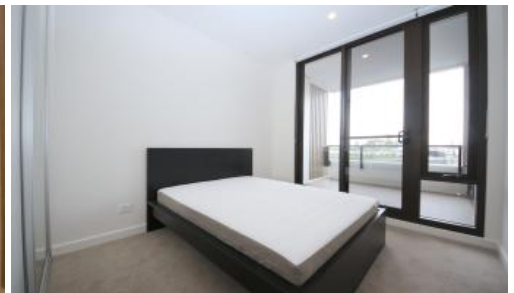




**C514, 4 Foundry Street, Erskineville**



## Fully furnished 1 bedroom Apartment with study

A new height of luxury for Erskineville

Walking distance to all amenity and 9mins walk to the train station. Inspect the property now!

The visually stunning apartments present a rare symphony of stylish design and modern practicality, offering luxury comforts with all the trimmings.

With exquisite architectural work and designer detail reflected at every level, the brilliantly curvaceous exterior and stately bronze facade hints at the grandeur within. Inspired by old-world glamour and nouveau prestige, Park Sydney welcomes a new era for urban luxury living.

Ideally situated in the heart of Erskineville's sophisticated village yet just moments away from the cosmopolitan city buzz, Park Sydney is Sydney's finest new address. The impressive architecture presents an elegant stylish apartments and prestigious terraces each mirrored by equally glamorous interiors.

A unique village locale, Erskineville plays host to some of Sydney's most attractive eateries, designer fashion boutiques and contemporary art galleries. Everything you need, desire or dream of is at your doorstep.

Features of these beautiful apartments include:

- Efficient layouts, minimal wasted space
- Various layouts over multiple levels on offer
- Luxurious finishes through out, impeccable attention to detail

1 1

**Price** \$750 Deposit taken, inspection cancel

**Property Type** Rental

**Property ID** 1809

### Agent Details

Wenting(Pauline) Shi - 0493227675  
Alan Tong - 0410413886

### Office Details

Ashfield  
Suite 58 1 Brown Street Ashfield NSW  
2131 Australia  
02 9799 8886



Timber look floorboards, ducted A/C

Please message Pauline on 0493227675 for inspection

The above information provided has been furnished to us by the vendor/s. We have not verified whether or not that information is accurate and do not have any belief in one way or the other in its accuracy. We do not accept any responsibility to any person for its accuracy and do no more than pass it on. All interested parties should make and rely upon their own inquiries in order to determine whether or not this information is in fact accurate.