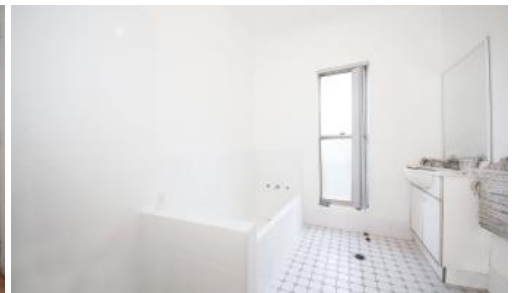




3, 151-153 Ray Road, Epping



Family Friendly & Quiet Villa in Great Location

Positioned in one of the finest streets in Epping, this beautifully designed villa is far more spacious than your average front villa and will cater for the personal needs of young families, retirees and astute down-sizers. Peacefully positioned, this contemporary villa is an immaculate home of space, peace and genuine privacy.

- Timber Flooring throughout with generous Lounge space
- Three good-sized bedrooms, two with built-in wardrobes
- Air Con in Master bedroom and lounge room
- Internal Laundry
- Light-filled lounge and dining area
- Private courtyard with clothes line and easy maintenance
- Zoned for Epping West Public, Epping Boys and Cheltenham Girls
- Bus stop nearby to Epping Station one of the Main public transport station
- Lock-up garage with easy rear access to the backdoor plus front car space

 3  2  1

Price \$800.00 Per Week.
Property Type Rental
Property ID 1868

Agent Details

Jody Zhang - 0493388441

Office Details

Ashfield
Suite 58 1 Brown Street Ashfield NSW
2131 Australia
02 9799 8886

The above information provided has been furnished to us by the vendor/s. We have not verified whether or not that information is accurate and do not have any belief in one way or the other in its accuracy. We do not accept any responsibility to any person for its accuracy and do no more than pass it on. All interested parties should make and rely upon their own inquiries in order to determine whether or not this information is in fact accurate.

C A P R I
PROPERTY MANAGEMENT