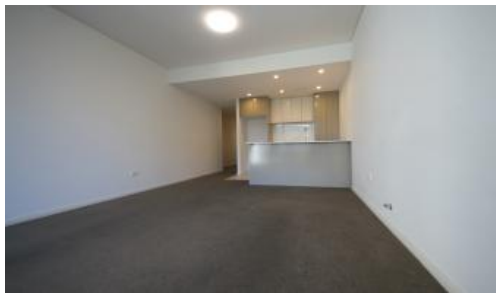


Leased



**Unit 2077, 78A Belmore St, Ryde**



## North Facing Two Bedroom Apartment, Contemporary Lifestyle in Convenient Location

Quietly positioned in a family-friendly location, this stunning north-facing apartment offers the perfect combination of size, quality and convenience. Featuring a sleek low-maintenance design, the light-filled open-plan layout seamlessly flows into a covered entertainer's balcony, complete with privacy and comfort. Just moments away from Meadowbank & Top Ryde shopping centres, Meadowbank train station, Ferry Wharf, foreshore parks, and quality schools.

This property features:

- Spacious layout offering open plan living and dining areas
- Floor-to-ceiling glass doors open to a covered balcony
- Stylish gas kitchen with stone benchtops and stainless appliances
- Master bedroom with built-in wardrobe & shower ensuite
- Internal laundry and ducted air conditioning throughout
- Secure basement car parking complete with a storage cage
- Walk to Meadowbank train station, shops, restaurants and parks
- Moments from Meadowbank Public School, Meadowbank TAFE

Please message Pauline on 0493227675 for inspection.

 2  2  1

**Price** \$680 deposit taken, inspection cancel

**Property Type** Rental

**Property ID** 1872

### Agent Details

Wenting(Pauline) Shi - 0493227675

Alan Tong - 0410413886

### Office Details

Ashfield

Suite 58 1 Brown Street Ashfield NSW

2131 Australia

02 9799 8886



The above information provided has been furnished to us by the vendor/s. We have not verified whether or not that information is accurate and do not have any belief in one way or the other in its accuracy. We do not accept any responsibility to any person for its accuracy and do no more than pass it on. All interested parties should make and rely upon their own inquiries in order to determine whether or not this information is in fact accurate.