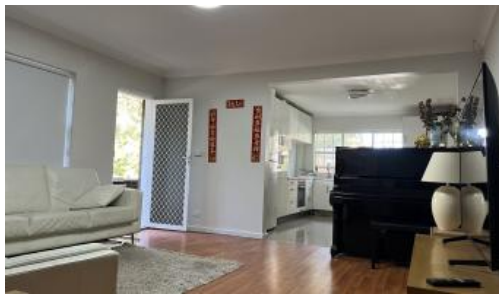




12-14 Tintern Rd, Ashfield



2 Bedroom Apartment with study room

Experience Ultimate Convenience in a Peaceful Setting

Nestled on the tranquil Tintern Road, this beautifully presented 2-bedroom + Study, fully furnished apartment offers the perfect blend of comfort and lifestyle. With an oversized living room and a spacious dining-in kitchen, this home is thoughtfully designed for easy living.

Prime Location:

- Just minutes' walk to Ashfield Train Station, Summer Hill station
- A short stroll to Summer Hill village, Ashfield Shopping Mall, vibrant restaurants, and cozy cafes
- Within walking distance to Ashfield Public School

Key Features:

- 2 sunlit balconies with serene, leafy outlooks
- 2 built-in wardrobes for ample storage
- Oversized living room, ideal for relaxation or entertaining
- Spacious dining-in kitchen for shared meals and gatherings
- Additional separate toilet for added convenience

Call or text Shirley on 0424072823 for inspection or inquiry.

The above information provided has been furnished to us by the vendor/s. We have not verified whether or not that information is accurate and do not have any belief in one way or the other in its accuracy. We do not accept any responsibility to any person for its accuracy and do no more than pass it on. All interested parties should make and rely upon their own inquiries in order to determine whether or not this information is in fact accurate.

🛏 2 📶 1 🚗 1

Price Fully furnished 2 bedroom + Study \$800/W

Property Type Rental

Property ID 1879

Agent Details

Ye Li (Shirley) Zhang - 0424072823

Office Details

Ashfield
Suite 58 1 Brown Street Ashfield NSW
2131 Australia
02 9799 8886

C A P R I
PROPERTY MANAGEMENT