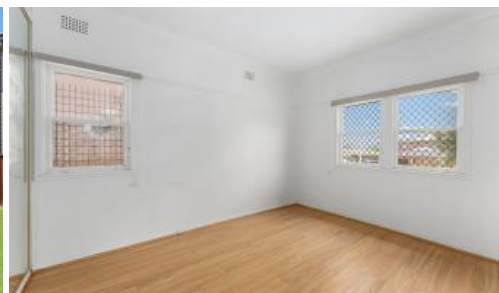


Sold

LAND SIZE  
897.9 m<sup>2</sup>

15.24m

16 Crawford St, Old Guildford



### Endless Potential – Renovate, Rebuild,

Big block of land incredible opportunity to build your dream residence or a lucrative investment! Whether an investor seeking growth potential, or a homeowner to build a new duplex, living one and investing one..

Key Features: + 897.9 sqm block with a 15.24m frontage

- explore development possibilities + 4 well-sized bedrooms
- ready for a modern refresh + Kitchen with separate dining
- upgrade and make it your own + Multipurpose garage
- potential for a granny flat or teenage retreat + Carports
- front and rear carports for added convenience + Second toilet
- extra outdoor toilet for practicality + Peaceful, high-side position
- sought-after, family-friendly neighbourhood + Unmatched convenience
- close to schools, parks, public transport, access With endless possibilities, a property like this rarely comes to the market.

🛏 4 🗺 1 🚗 1

Price	SOLD
Property Type	Residential
Property ID	1933

#### Agent Details

Alan Tong - 0410413886  
Yim (Kelvin) Kam - 0449863838

#### Office Details

Ashfield  
Suite 58 1 Brown Street Ashfield NSW  
2131 Australia  
02 9799 8886

CAPRI  
PROPERTY MANAGEMENT

Contact Alan Tong on 0410413886 today for further information

The above information provided has been furnished to us by the vendor/s. We have not verified whether or not that information is accurate and do not have any belief in one way or the other in its accuracy. We do not accept any responsibility to any person for its accuracy and do no more than pass it on. All interested parties should make and rely upon their own inquiries in order to determine whether or not this information is in fact accurate.