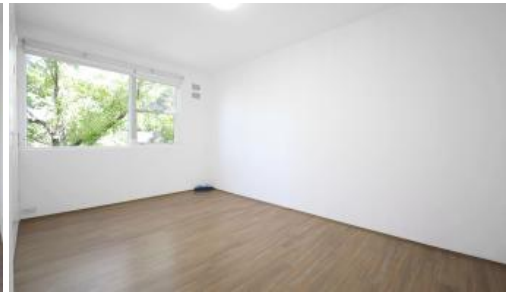




## Unit 11/705 Pacific Hwy, Gordon



### 2 Bedroom Unit Located in the Heart of Gordon

Neat and tidy unit at back of a very quiet and well maintained complex, within walking distance to public transport and close proximity to Gordon Shopping Centre.

- Spacious full brick first floor apartment located in quiet position in the rear of small boutique complex.
- Large living & dining area open to private East facing balcony.
- Light filled original gas kitchen & meals area.
- Large bedrooms, built-in wardrobes and separate toilet and full bath.
- Internal access to parking space. Secured storage cage.
- 400m stroll to Gordon Station, village shops, buses and Ravenswood School for Girls.
- Within the Killara Public School and Killara High School catchments.

 2  1  1

**Price** Deposit Taken \$670 per week

**Property Type** Rental

**Property ID** 1951

#### Agent Details

Jason Wu - 0493243385

Yim (Kelvin) Kam - 0449863838

#### Office Details

Ashfield

Suite 58 1 Brown Street Ashfield NSW

2131 Australia

02 9799 8886

The above information provided has been furnished to us by the vendor/s. We have not verified whether or not that information is accurate and do not have any belief in one way or the other in its accuracy. We do not accept any responsibility to any person for its accuracy and do no more than pass it on. All interested parties should make and rely upon their own inquiries in order to determine whether or not this information is in fact accurate.

  
**PROPERTY MANAGEMENT**