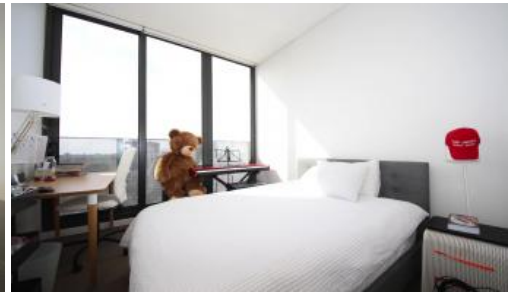




1801, 225 Pacific Highway, North Sydney



Superb Level 18 Apartment in luxury 'Lucent' building

Lucent is North Sydney's unique destination for luxurious residential living. These extraordinary light-filled apartments set a new standard for inspired design. With lavish resort-style facilities and a lush rooftop garden and opulent interiors and features, it's the perfect place to indulge, entertain and unwind.

Features:

- Superb East facing views, 18th floor and security lift access
- Engineered timber floors, carpet in bedroom
- Full height floor to ceiling glass windows
- Reverse cycle ducted air conditioning
- Stone bench tops and polyurethane cabinetry
- Mirrored splashbacks and European appliances
- Internal laundry, storage cage and NBN wiring
- Resort-Style facilities: infinity pool overlooking Sydney Harbour, stunning rooftop garden, gym, multi-function room and outdoor BBQ area
- Minutes Walk to North Sydney Station, shops, cafes, premier schools

Outgoings:

- Strata - Approx. \$1664 per quarter
- Council - Approx. \$238 per quarter
- Water - Approx. \$175 per quarter

Area:

89sqm + Carspace 16sqm + Storage 3sqm

🛏 2 📶 2 🚗 1

Price	SOLD
Property Type	Residential
Property ID	307

Agent Details

Ye Li (Shirley) Zhang - 0424072823
Yim (Kelvin) Kam - 0449863838

Office Details

Ashfield
Suite 58 1 Brown Street Ashfield NSW
2131 Australia
02 9799 8886

C A P R I
PROPERTY MANAGEMENT

The above information provided has been furnished to us by the vendor/s. We have not verified whether or not that information is accurate and do not have any belief in one way or the other in its accuracy. We do not accept any responsibility to any person for its accuracy and do no more than pass it on. All interested parties should make and rely upon their own inquiries in order to determine whether or not this information is in fact accurate.