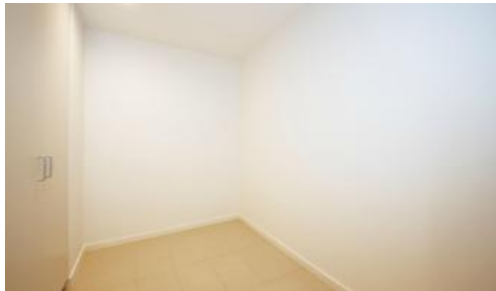


Leased



214, 19 Baywater Drive, Wentworth Point



### Spacious & Modern 1 Bedroom w/Private Courtyard

This lovely garden-facing modern apartment boasts a spacious internal area of over 55sqm with fantastic 15sqm private courtyard.

- Open plan living and dining area
- Sunny and private garden facing courtyard
- Modern kitchen with quality stainless steel appliances
- European quality Oven, Gas Stove, Microwave, Dishwasher, Drier & Air Conditioner
- Large bedroom with built-ins and electric blind
- Security Building with security intercom
- Bus at the door directly to Olympic Park station, Strathfield and Burwood
- Short walk to Footbridge to Rhodes
- Ferries to Sydney CBD and Parramatta
- 14km from Sydney CBD and 8km from Parramatta CBD
- Short drive to large retail and dining precincts including Newington, Rhodes, Top Ryde and Parramatta
- On-site state of the art facilities (Pulse Club), including gym, indoor heated swimming pool, tennis court.

🛏 1 📶 1 🚗 1

Price	Deposit Taken
Property Type	Rental
Property ID	338

#### Agent Details

Yim (Kelvin) Kam - 0449863838

#### Office Details

Ashfield  
Suite 58 1 Brown Street Ashfield NSW  
2131 Australia  
02 9799 8886



Please call Alan 0410 413 886 for inquiry or inspection.

The above information provided has been furnished to us by the vendor/s. We have not verified whether or not that information is accurate and do not have any belief in one way or the other in its accuracy. We do not accept any responsibility to any person for its accuracy and do no more than pass it on. All interested parties should make and rely upon their own inquiries in order to determine whether or not this information is in fact accurate.