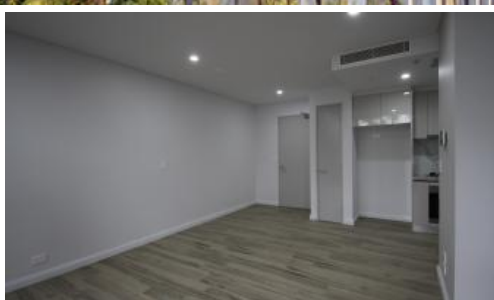
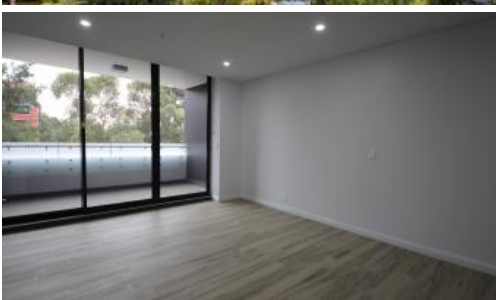




259, 100 Bennelong Parkway, Sydney Olympic Park



### Personal Single Bedder with Spacious Lounge

This very generously spaced apartment is definitely an opportunity to not miss. The Single Bedder is accompanied with sunlight during the day, and is humbly quiet during the night. The lounge offers a Modern and a Contemporary design which emphasis the comfort of living in this well articulate spaces. With amenities close by such as the Train Station and shopping centre, this apartment offers easy commuting.

- Open plan living and dining area
- Easy access to Balcony
- Modern kitchen with wide stone bench top and quality stainless steel appliances
- Air Conditioner for all seasons long
- Internal Laundry
- Large bedroom with built-ins
- With security intercom and internal security system

🛏 1 📶 1 🚗 1

<b>Price</b>	Deposit Taken
<b>Property Type</b>	Rental
<b>Property ID</b>	375

#### Agent Details

Yim (Kelvin) Kam - 0449863838

#### Office Details

Ashfield  
Suite 58 1 Brown Street Ashfield NSW  
2131 Australia  
02 9799 8886

The above information provided has been furnished to us by the vendor/s. We have not verified whether or not that information is accurate and do not have any belief in one way or the other in its accuracy. We do not accept any responsibility to any person for its accuracy and do no more than pass it on. All interested parties should make and rely upon their own inquiries in order to determine whether or not this information is in fact accurate.

