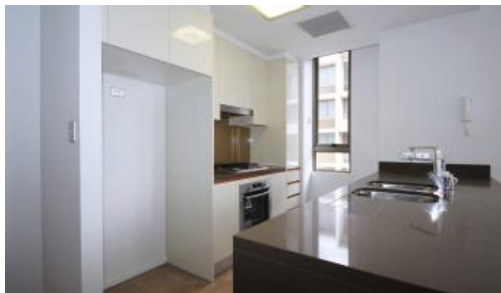




**303, 29 Seven Street, Epping**



### Superbly-Located Spacious 2 Bedder

This Wonderful Apartment with City Views in Epping Park. Promising Lifestyle Excellence for new Families or Young Couple looking for a convenient locate to live in. Within minutes of Eastwood Shopping Centre, Epping district and Carlingford Shopping Centre. This luxurious as-new apartment provides an exceptional haven of space, comfort & natural light. It is positioned a short walk to public transport & close to quality school.

#### Features:

- Cleverly combined Open Lounge and Dining areas
- 2 Spacious Bedrooms with Mirrored Built-in Wardrobes + Master Bedroom with En-suite
- Designated Study Nook
- Ducted Air Conditioning
- Modern Gas-Cooking Kitchen with Caesarstone Bench
- Internal Laundry with Premium Washing Machines included
- Stainless Steel Appliances including Gas Cooking & Dishwasher
- Security Access & Car Space
- Minute drives to nearby reputable Primary Schools & High Schools
- Common Facilities: Sauna, Swimming Pool, Spa, Gym, Tennis courts and an Entertainment Playground
- On-site Child Care Centre

Please contact Geoff on 0492835790 for inquiry or inspection.

The above information provided has been furnished to us by the vendor/s. We have not verified whether or not that information is accurate and do not have any belief in one way or the other in its accuracy. We do not accept any responsibility to any person for its accuracy and do no more than pass it on. All interested parties should make and rely upon their own inquiries in order to determine whether or not this information is in fact accurate.

 2  2  1

**Price** Inspection Cancelled + Deposit Taken  
**Property Type** Rental  
**Property ID** 804

#### Agent Details

Yim (Kelvin) Kam - 0449863838

#### Office Details

Ashfield  
 Suite 58 1 Brown Street Ashfield NSW  
 2131 Australia  
 02 9799 8886

