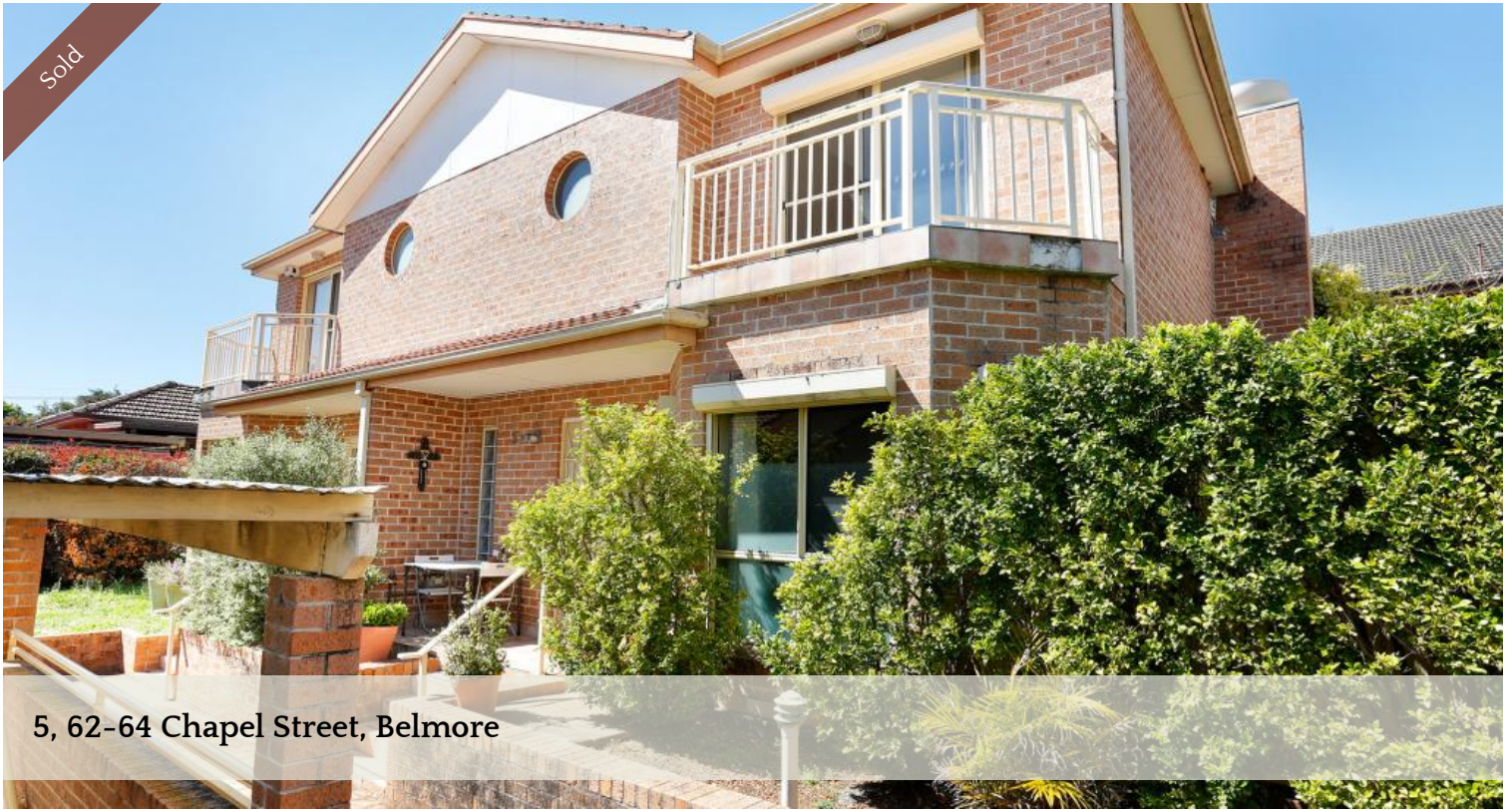


Sold



5, 62-64 Chapel Street, Belmore



### Modern Full Brick Terrace Style Townhouse

An inviting sun filled ambience delivers an appealing family lifestyle in this modern and exceptional solid brick townhouse. Located at the end area of a quiet and small complex of 7, this property is positioned in a convenient, tree-lined street and ready for your immediate enjoyment. Features include:

- Spacious open plan kitchen, lounge, dining and sun room
- Air conditioner in all rooms, floorboard throughout, security shutters
- Massive gourmet kitchen with gas cooking and stainless steel appliances
- Two double sized bedrooms, main bedroom with walk-in robe and second bedroom with built-in - Main bedroom with ensuite
- Spacious main bathroom with bathtub plus floor to ceiling tiling
- Generous easy care paved courtyard
- Internal laundry with 3rd toilet
- 2 lock-up garage plus large 12sqm storage room
- Moments to schools, parks, transport and shops

#### Outgoings ( approx.)

Water \$154p.q

Strata \$1016p.q

Council \$314p.q

🛏 2 📶 2 🚗 2

Price	SOLD
Property Type	Residential
Property ID	934

#### Agent Details

Ye Li (Shirley) Zhang - 0424072823  
Yim (Kelvin) Kam - 0449863838

#### Office Details

Ashfield  
Suite 58 1 Brown Street Ashfield NSW  
2131 Australia  
02 9799 8886



The above information provided has been furnished to us by the vendor/s. We have not verified whether or not that information is accurate and do not have any belief in one way or the other in its accuracy. We do not accept any responsibility to any person for its accuracy and do no more than pass it on. All interested parties should make and rely upon their own inquiries in order to determine whether or not this information is in fact accurate.