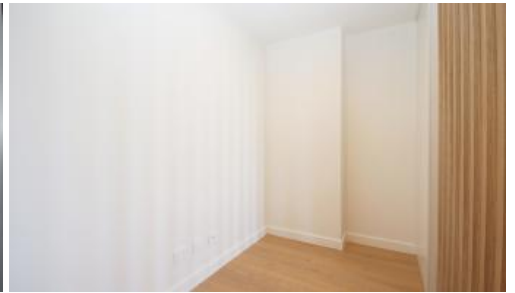




B704, 57 Ashmore Street, Erskineville



Brand New Larger one bedroom plus study with sunny balcony

With exquisite architectural work and designer detail reflected at every level, the brilliantly curvaceous exterior and stately bronze facade hints at the grandeur within. Inspired by old-world glamour and nouveau prestige, Park Sydney welcomes a new era for urban luxury living.

- Larger bedroom with built in wardrobes
- Sleek designer kitchen with high end appliances including dishwasher
- Well appointed main bathroom with separate internal laundry
- Spacious light filled living areas
- Study perfect for the home office and one Storage
- Sunny courtyard perfect for entertaining
- Ducted air conditioning
- Communal BBQ facilities
- Only moments to shops, parks, cafes and restaurants
- Walk to Sydney Park & Erskineville Station
- Pets on application

Call Alan on 0410413886 for inspection

The above information provided has been furnished to us by the vendor/s. We have not verified whether or not that information is accurate and do not have any belief in one way or the other in its accuracy. We do not accept any responsibility to any person for its accuracy and do no more than pass it on. All interested parties should make and rely upon their own inquiries in order to determine whether or not this information is in fact accurate.

1 1

Price	DEPOSIT TAKEN
Property Type	Rental
Property ID	977

Agent Details

Alan Tong - 0410413886

Office Details

Ashfield
Suite 58 1 Brown Street Ashfield NSW
2131 Australia
02 9799 8886

